

BeeBella
Oshkosh, Wisconsin, USA
beebella.buzz



Jonathan Adam Dudzinski
Co-Founder
jonathan.dudzinski@beebella.buzz
+1.920.312.1433



Lindsey Elizabeth Dudzinski
Vice President
Lindsey.Dudzinski@bucks.com
+1.920.659.2650

Bee Bella's story starts with three beekeepers on a mission to save the honeybee, a stand at the Oshkosh Farmers Market, and the insight that consumers want an ultra-premium lip balm with a positive impact on the world. Today the rapidly growing brand is carried by more than 4,000 retailers.



Corncob
Waukesha, Wisconsin, USA
corncobinc.com

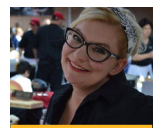


Doug Ingchen Hwang
President
Doug@corncobinc.com
+1.414.828.1138

CORNCOB is on a mission to "Change Water, Change Lives." The company's high-velocity cross-flow (HVCF) membrane disc filtration innovation empowers a paradigm shift from the conventional, century-old wastewater treatment methodology using biological/chemical processes and has the ability to concentrate solids to a molecular degree in fluids with a self-cleaning, low-energy-consumption, modular automated system.



Croix Valley Foods
Hudson, Wisconsin, USA
CroixValleyFoods.com



Luonda Holter
Owner
luholter@croixvalleyfoods.com
+1.612.499.2302



Damon Michael Holter
Owner
damonholter@croixvalleyfoods.com
+1.612.756.4985

Croix Valley Foods manufactures and sells a line of all-natural, gluten-free barbecue sauces, marinades, dry rubs, and drink seasonings. All products are handcrafted in small batches to assure quality. Croix Valley products can be found in hardware and home improvement stores, meat markets, specialty food shops, and grocery stores across the globe.



Energy Tech Innovations
Milwaukee, Wisconsin, USA
energytechinnovationsllc.com



Bryan Rudolph Johnson
President
bjohnson@eti-renewables.com
+1.262.844/6401

Energy Tech Innovations (ETI) offers simpler, lower-cost water-based biogas upgrading systems that produce high-quality, renewable biomethane. ETI's patented systems are scalable from small to large and have flexible, modular configurations. Also, ETI's unique beneficial CO2 reuse process provides significant wastewater treatment operational savings and reduces CO2 emissions.



FloClaire
Madison, Wisconsin, USA
ultimatearganoil.com



Richard Tim Muma
Founder/CEO
richard.m@floclaire.com
+1.608.577.9387

At Floclaire Group, our mission is to empower individuals to embrace their natural beauty and enhance their confidence through innovative and high-quality hair and skin care products. We are dedicated to providing personalized customer service and building strong relationships with our global distributors, salon partners, and customers. With a commitment to continuous research and development, we strive to create products that address the unique needs of our diverse clientele. Our ultimate goal is to be a trusted and preferred choice in the beauty industry, delivering exceptional results and fostering self-expression and self-care. Unlike most brands, we do not use aggressive ingredients such as sulfates and parabens, and all our products are cruelty-free and salon-tested. We sell to professional distributors and salons that are looking for quality products that make hair healthy and vibrant while also providing a financial incentive.



Forward Health
Madison, Wisconsin, USA
forward.health



Michael Barbouche
Founder and CEO
michael.barbouche@forwardhealthgroup.com
+1.608.729.7512

Forward Health Group (FHG) is a health care and medical analytics company based in Madison, Wisconsin. Established in 2009, FHG works at the intersection of clinical, financial, and operational transactional data to measure and quantify outcomes, efficiency, and cost of care. The company's recent focus is on clinician burnout and practice efficiency.



Gentueri
Verona, Wisconsin, USA
Gentueri.com



Randy Nagy
CEO
rnagy@Gentueri.com
+1.608.949.8568

Gentueri develops, manufactures, and provides innovative, non-invasive sample collection devices that preserve samples at room temperature and can be integrated into automated laboratory processing. Our collection kits offer a simple protocol that collects a sample in one minute with artificial intelligence support to ensure proper collection and ensure that a quality sample is collected.



Huth Ben Pearson International
Hartford, Wisconsin, USA
huthbenders.com



Kenneth Murray
President
kmurray@huthbenders.com
+1.262.613.8810

Huth Ben Pearson International serves tube and pipe fabricators worldwide with high-quality, durable, and powerful fabricating equipment, tooling, and accessories.

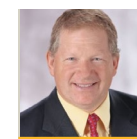
PowerGistics
Columbus, Wisconsin, USA
powergistics.com



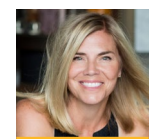
Crystal Lyn Morgan
Director of Sales and Marketing
crystal@powergistics.com
+1.608.957.4934

For more than 50 years, TTP (formerly Thermal Transfer Products) has designed and manufactured heat exchangers for the fluid power industry. TTP is a recognized industry leader, providing a complete portfolio of high-performing heat exchangers for oil cooling and compressor cooling.

Scrusher Shoe and Boot Brush
Coon Valley, Wisconsin, USA
scrusher.com



Robert J. Flottmeyer
CEO
bobf@scrusher.com
+1.608.792.6755



Nancy A. Flottmeyer
Treasurer
naflott@gmail.com
+1.608.780.8022

At Chaseburg Manufacturing, we manufacture the Scrusher originally patented shoe and boot brushes and sell them to everyone who wants to keep dirt outdoors, not on their floors. Unlike the mats and rugs sometimes used for this purpose, the Scrusher thoroughly cleans the bottom and sides of your footwear. You may have seen the concept on golf courses around the world; we apply that same long-lasting design to the household and industrial Scrushers. We've been making the Scrusher for over 30 years—made in Wisconsin the entire time.

State of Wisconsin



Governor Tony Evers

On Nov. 6, 2018, the people of Wisconsin elected Tony Evers (Ē-vers) the 46th governor of Wisconsin. Prior to his election, he served as the Wisconsin state superintendent of public instruction, winning statewide elections in 2009, 2013, and 2017. With over three decades of public education experience, Governor Evers has dedicated his life to fighting for Wisconsin's children and serving the people of Wisconsin.



First Lady Kathy Evers

First Lady Kathy Evers was born and raised in Plymouth, Wisconsin, and met her future husband, Governor Tony Evers, in kindergarten. They had their first date at the junior prom and have been married for more than 40 years. Kathy graduated from Plymouth High School and later received an associate degree from the University of Wisconsin-Fond du Lac. In a career spanning more than three decades, Kathy held information technology management positions with private companies and provided computer software training and hardware technical support in Wisconsin public school districts, technical colleges, and the private sector. Together with the governor, she has lived and worked in various communities throughout Wisconsin, including Tomah, Oakfield, Verona, Oshkosh, and Madison. She and the governor have three adult children, all public-school graduates, and nine grandchildren.



Wisconsin Economic Development Corporation

InWisconsin.com

Madison, Wisconsin, USA



Missy Hughes

Secretary and
Chief Executive Officer

+1 608.210.6756

missy.hughes@wedc.org



Katy Sinnott

Vice President
Global Trade & Investment

+1.608.210.6838

katy.sinnott@wedc.org



Rome Rauter

Market Development Director
Global Trade & Investment

+1 608.210.6777

rome.rauter@wedc.org

The Wisconsin Economic Development Corporation (WEDC) leads economic development efforts for the state by advancing and maximizing opportunities in Wisconsin for businesses, communities and people to thrive in a globally competitive environment. Working with more than 600 regional and local partners, WEDC develops and delivers solutions representative of a highly responsive and coordinated economic development network. Visit www.wedc.org or follow WEDC on Twitter [@WEDCNews](https://twitter.com/WEDCNews) to learn more.

For more information, visit:
InWisconsin.com



GOVERNOR'S TRADE MISSION:

NETHERLANDS & BELGIUM

SEPTEMBER 9-16, 2023