



Contact:

Jennifer Clark
Glen Hills Middle School
414-351-7160 x2127 | jennifer.clark@glendale.k12.wi.us

Rose Jordan
Greenprint Partners
(206) 335-5370 | rose@greenprintpartners.com

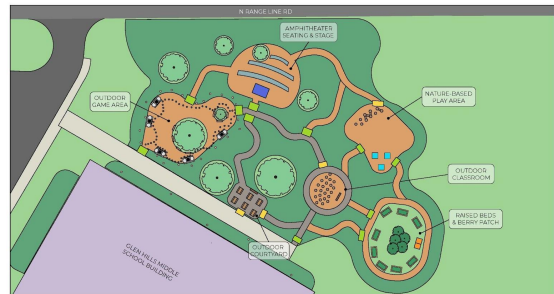
FOR IMMEDIATE RELEASE – 06/11/2022

Glen Hills Middle School Hosts ‘Community Planting Day’, Completing Phase I of Green Schoolyard Transformation

GLENDALE, WISCONSIN – More than 50 volunteers, including middle schoolers, faculty, and community members gathered at [Glen Hills Middle School](https://www.glenhillsmiddle.com) for an upbeat Community Planting Day on Saturday, June 11, 2022 to complete Phase I of a green schoolyard transformation, achieving a startling transformation in just one day. The student-led Green Team and their faculty advisors — science teachers Jennifer Clark and Chloe Steusser — guided students and volunteers to plant gardens that will soon surround raised garden beds and outdoor classrooms. “It was beyond satisfying to see the students’ vision for a green schoolyard begin to appear right before our eyes”, said project manager Hannah Kacprzak.

The Glen Hills’ ‘Green Team’ students have led the green schoolyard initiative every step of the way, envisioning the project, researching green infrastructure, reviewing designs, and attending site walks with the Greenprint Partners engineer. When asked what inspired her involvement, seventh-grader Annele said, “[This will] help our mental health by giving us the opportunity to take a breath and relax outside ... to enjoy the weather while still being in school.”

Many students echoed the benefits of being outdoors to enhance their school day and learning. Talia, an eighth-grader at Glen Hills said, “Nature helps mental health because it clears the head and relaxes you, and natural play spaces can help physical health and encourage kids to keep more active.” She continued, “Green spaces...show our students’ care for our school and the environment.”



Glen Hills Middle School is one of seven suburban public schools in Milwaukee County working with [Greenprint Partners](https://www.greenprintpartners.com) to launch a green schoolyard transformation to increase natural space in school communities, create enriching areas for outdoor learning and play, and manage stormwater with nature-based solutions. The conceptual design is the vision of the Green Team students, and was funded through MMSD’s [Fresh Coast Green Schoolyards Program](https://www.mmsd.com/fresh-coast-green-schoolyards-program) and a USDA NRCS Conservation Innovation Grant. Phase I construction was supported by Glen Hills Middle School, the City of Glendale, and community member donations and labor, and excavation services were provided by Great Lakes Excavating.

Phase II of the transformation, which is scheduled for construction summer of 2023, will include outdoor classroom spaces – including one ADA accessible space – raised planter beds, more native plants, additional



seating, a 0.5-mile track for community use, nature-based exercise stations, two bioswales, rain barrels and green houses. The students are full of ideas for their new green schoolyard: pollinator trees to support the ecosystem, lessons and activities to connect students to the natural space, eco-friendly artistic elements, and berry patches.

Jocelyn, a seventh grader at Glen Hills, said, "It's our way to leave our mark on the school for years to come."

At the close of the event, science teacher Jennifer Clark expressed enormous gratitude to the "Glen Hills students, families, community members, resident experts, friends and family, and Glen Hills maintenance crew, for giving their time, expertise, donations of plants and materials, and all of their tremendous efforts today to make our green team students' ideas and designs a reality! Let the legacy of outdoor and environmental learning begin. Next up: Phase II!" Science teacher Chloe Steusser added, "I'm so thankful for everyone who came out, especially the students who are making their dream a reality. The outdoor spaces are going to be amazing!"

GLEN HILLS MIDDLE SCHOOL MASTER PLAN



LEGEND						
NATIVE PLANT LANDSCAPE	SCHOOL BUILDING	NEW TREE	NEW TRACK	AMPHITHEATER SEATING	PAVERS	
RAIN GARDEN	NEW GREENHOUSE	RAISED BED	STAGE	NEW EXERCISE STATION	GAGA BALL COURT	
MULCH	CONCRETE	RAIN BARREL	PERGOLA	BERRY BUSH	COMPOST BIN	
EXISTING TREE	WORKSTATION	GAME TABLE	PICNIC TABLE	BENCH	BRIDGE	

Greenprint Partners (WBE, B-Corp) is an award-winning planning, engineering and design firm that delivers inspired green infrastructure solutions. Greenprint's team of urban planners, engineers, landscape designers, and communications professionals are on a mission to get the most good out of green infrastructure. Learn more at www.greenprintpartners.com.

###